

Water & Waste Solutions



SIRO

Standard Industrial
Reverse Osmosis

Introduction

Reverse Osmosis is a process of Physical separation of dissolved solids and minerals present in water. To ensure this and offer with the right solution from our wide range of combinations, we have made available to our sales force a customised software called SIROSOFT.

Plant Automation

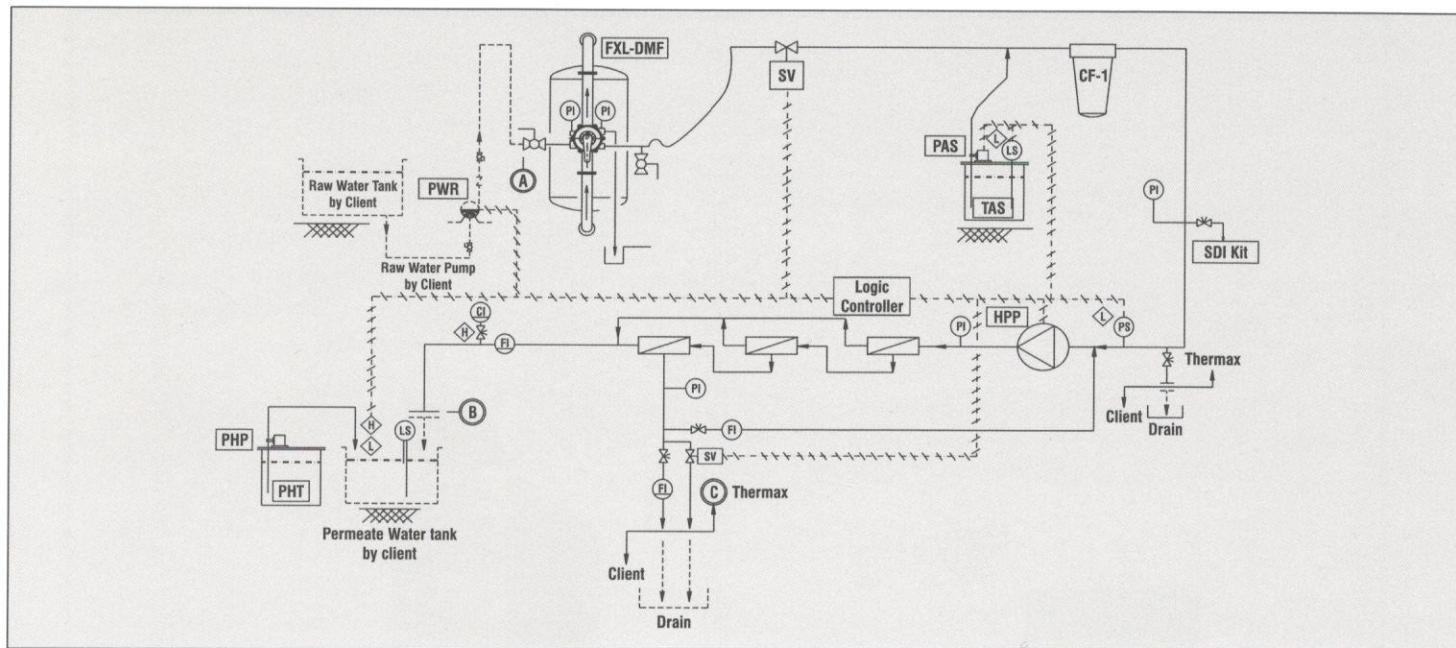
A unique dedicated RO Controller "SIROLOGIC" is developed for this product range which enables the following :

- Reduces chances of Membrane Scaling and Fouling.
- Pump protection from Dry Running.
- Reduced operation interface due to Fully Automated Switching Operation.
- Outlet Water Quality Monitor.

This takes place through the following features :

- Auto Flushing of feed side of membrane periodically.
- HPP Protection through 'trips' on Low Suction Pressure.
- Automatic Start and Stop of plant corresponding to low and high level in Permeate water tank respectively.
- Plant trips if level of antiscalant in dosing tank is low.
- Alarm on high conductivity of product water.
- Mimic Diagram to indicate plant status.

Process Flow Diagram



Capacity

1.0 m³/hr to 40 m³/hr higher capacity up to under 200m³/hr under STO Range available on request.

Advantages

The following features give you the 'RO Advantage'

- Compact and modular RO blocks.
- Easy installation, operation and servicing.
- Need specific selection possible from a wide range.
- High level of plant automation.
- Stainless steel multistage centrifugal pump. Inline suction and delivery allows for easy maintenance and access.
- Online product water quality monitoring.
- membrane and pump protection features.



Sustainable Solutions in

Registered Office

D-13, MIDC Industrial Area,
R D Aga Road, Chinchwad,
Pune 411019, India
Tel : +91 20 66122999 / 66155000
Fax : +91 20 27472049
enquiry@thermaxglobal.com

India Toll Free No.
1800 - 209 - 0115
Indonesia Toll Free No.
803 - 016 - 1599
Prefix digits :
001 for Indosat users or

Thermax Business Portfolio

- Heating
- Cooling
- Power Generation
- Chemicals
- Solar
- Water and Wastewater Solutions